

Social educators in the Czech Republic profession, challenges and professional support

Jan Šmída





About me



- **Vice-chairman of the Association of social educators in the Czech Republic**
- **Assistant professor at Palacký University Olomouc**

Table of Contents

- 1. Development of social education**
- 2. Social educators in the Czech Republic**
- 3. Competence profile**
- 4. Challenges**
- 5. Professional support**
- 6. About our work**

Development of social education

- **Between 1945 and 1989, social education was considered undesirable**
- **After 1989, social education began to be perceived in four ways:**
 - **Methodological - social education approach**
 - **Pedagogical discipline**
 - **Study subject**
 - **Study programme**

Development of social education

- **1997 - First international conference Socialia**
- **2000 - First graduates of study programmes**
- **Around 2005 - First positions of social educators**
- **2013 - Establishment of the Association of educators in social education**
- **2013 - Establishment of a scientific journal Social education**
- **2014 - First efforts to regulate the position of social educator by legislation**

Development of social education

- **2022 - Establishment of the Association of social educators**
- **2022 - Ministry of Education: “we don’t need them”**
- **2022 - Around 50 to 70 social educators in schools**
- **2024 - First monograph on the position of social educator**
- **2024 - Methodology of work for social educators**
- **2024 - Around 250 to 300 social educators in schools**
- **2025 - Code of ethics for social educators**
- **2025 - Ministry of Education: “we need them!”**
- **2026 - The position of social educator should be regulated by legislation**

Social educators in the Czech Republic

- **Social educators work mostly in basic education (primary and lower secondary) or in high schools.**
- **They work with all students, their families and teaching staff.**
- **Their aim is to promote personal and emotional development. As well as offering support, counselling and intervening when needed.**
- **Social educators are called “bridge” between the school, the student's family and external institutions.**

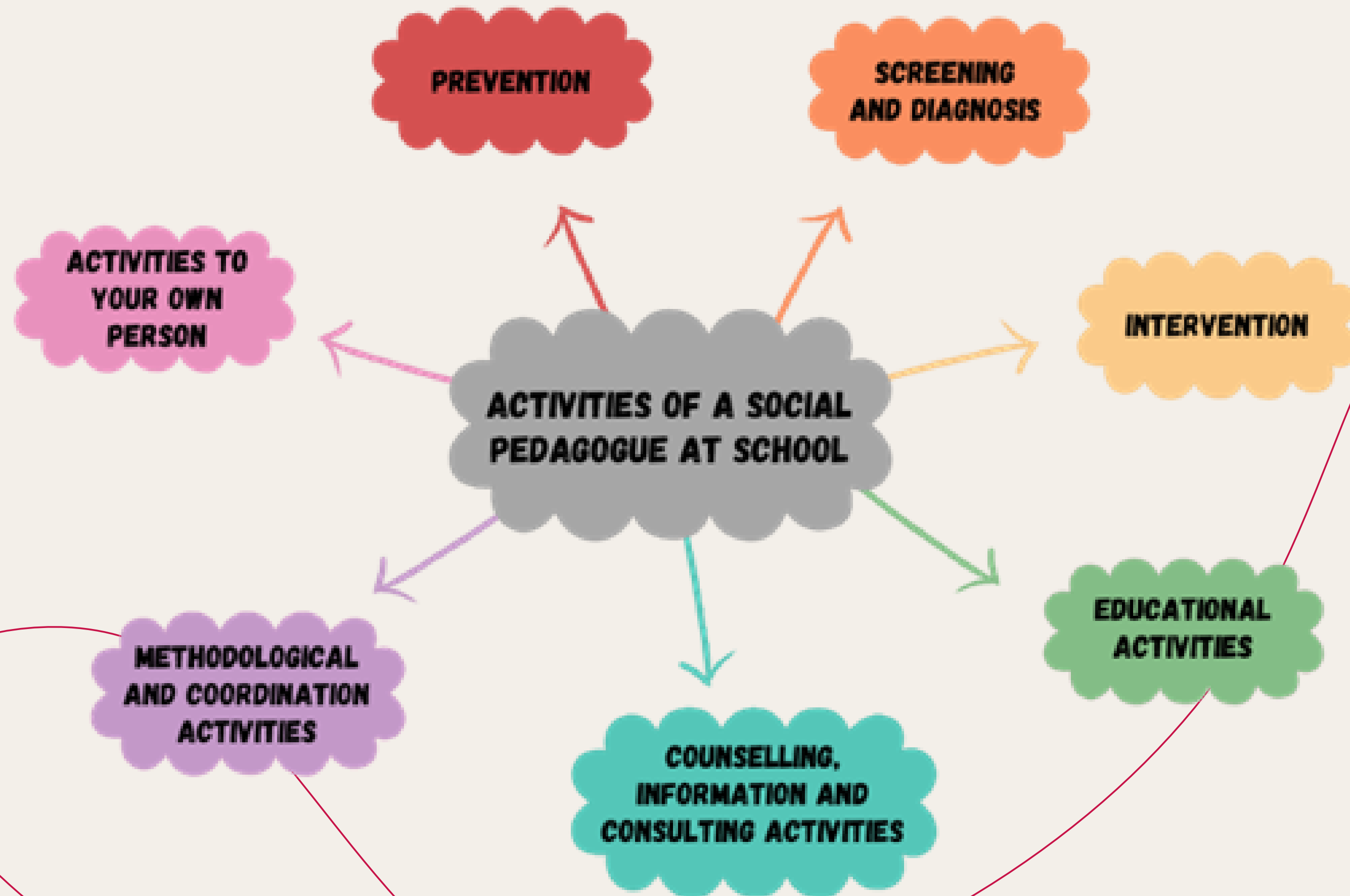
Competence profile of social educator

Professional competencies

- **Competencies in the field of social education**
- **Preventive competencies**
- **Screening and diagnostic competencies**
- **Intervention competencies**
- **Educational competencies**
- **Counselling competencies**
- **Methodological and coordination competencies**
- **Communication competencies**
- **Multicultural competencies**

Personal competencies

Activities of a social educator at school



Social educators in the Czech Republic

Actual challenges in schools = job for social educators

Social educators in the Czech Republic

Actual challenges in schools = job for social educators

- **Trauma, emotions, difficult moments in life**
- **Disadvantages**
- **Risky or challenging behaviour**
- **Poor relationships and school climate**
- **Overburdened teachers**
- **And much more...**

Role of a social educator

**Developmental/educational
function**

**social and emotional development,
prevention, leisure time, self
regulation, life skills, etc.**

**Intervention/compensation
function**

**interventions with individuals,
classes and families, multidisciplinary
cooperation, crisis intervention,
support and care, counselling etc.**

Currently the biggest task for social educators

- **Identification and support of children with social disadvantages**

Currently the biggest task for social educators

- **Identification and support of children with social disadvantages**
 - **But which children are socially disadvantaged?**

Currently the biggest task for social educators

- Identification and support of children with social disadvantages
 - But which children are socially disadvantaged?



Currently the biggest task for social educators

- Identification and support of children with social disadvantages
 - But which children are socially disadvantaged?



Currently the biggest task for social educators

We consider the following children to be socially disadvantaged.
Children...:

- 1.does not have adequate **support for development** in the home environment
- 2.has not sufficiently acquired the **language**
- 3.exhibits challenging **behavior**
- 4.have **low motivation** to learn and **low participation** in education
- 5.has **difficulty concentrating** on lessons due to insufficient fulfilment of his/her psychological needs
- 6.experience **barriers to learning** as a result of their physical and material needs not being met.
- 7.the children's **parents are not cooperating** with the school.

Currently the biggest task for social educators

**Identification
and diagnostics
of needs**



Support and care

Currently the biggest task for social educators

**Identification
and diagnostics
of needs**



Support and care

For children

For their families

For their teachers

List of social educators' activities

- **Identification of pupils with social disadvantages**
- **Identification of pupils with challenging behaviour**
- **Diagnostics of the pupil's family background**
- **Diagnostics of the pupil's physical and psychological needs**
- **Early identification of pupils at risk**
- **Identification of bullying and unhealthy relationships in the classroom**
- **Screening in the school environment and in the local environment of pupils' families**
- **Supporting the climate of the pedagogical staff**
- **Supporting school/classroom climate**
- **Supporting pupils' mental health**
- **Developing pupils' socio-emotional learning**
- **Implementation of leisure/extracurricular activities and school events**
- **Supporting the personal, social and moral development of pupils**
- **Long-term care for pupils with various disadvantaged**
- **Participation in mutual meeting with other social educators**
- **Intervention to pupils' needs**

List of social educators' activities

- **Intervention to pupils' challenging behaviour**
- **Intervention to pupils' risky behaviour**
- **Crisis intervention**
- **Casemanagement and interdisciplinary collaboration**
- **Documentation management**
- **Facilitation/mediation of conflicts**
- **Coordination of prevention activities at school**
- **Implementation of preventive activities in the school**
- **Creating own preventive activities in school**
- **Prevention and resolution of school failure**
- **Preventive influence on pupils' families**
- **Preventive influence on pedagogical staff**
- **Working with relationships in classroom collectives**
- **Providing consultations and support to pupils**
- **Providing consultations and support to pupils' families**

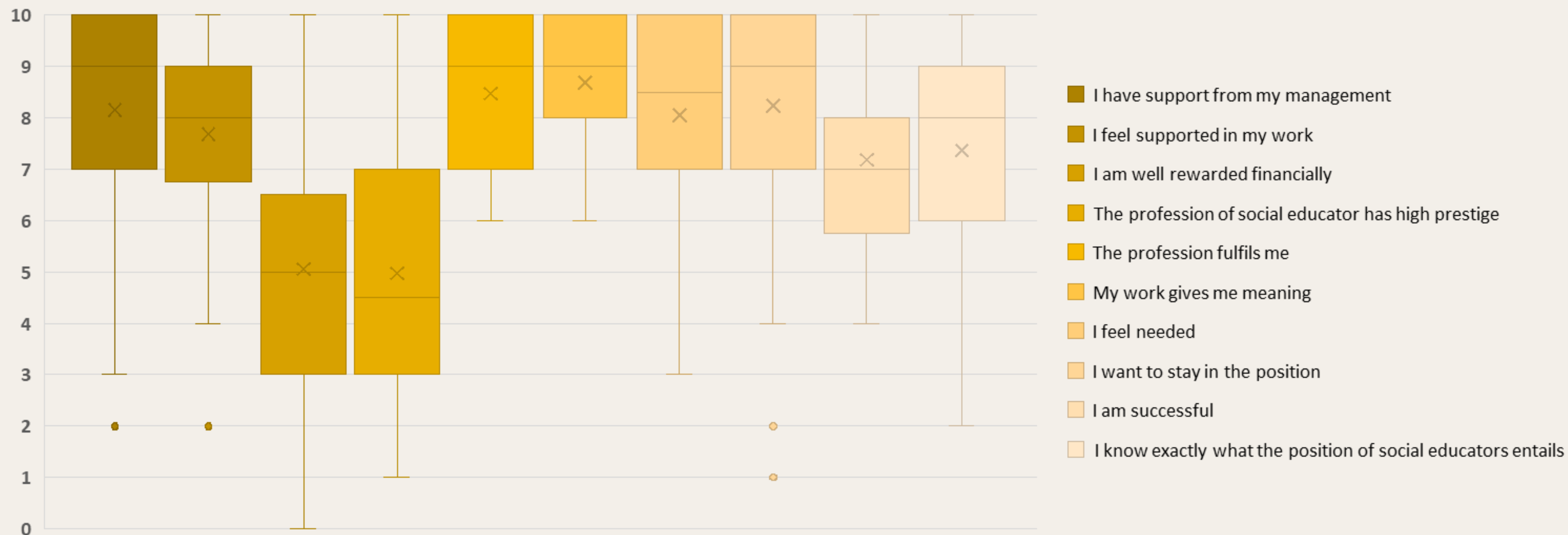
List of social educators' activities

- **Providing consultations and support to pedagogical staff**
- **Providing social therapy to pupils and their families**
- **Mediation of follow-up services for the pupil's family**
- **Providing career counseling to pupils and their families**
- **Providing social counseling to pupils and their families**
- **Providing social-pedagogical counseling to pupils and their families**
- **Community activities**
- **Fieldwork in the pupil's family and local environment**
- **Pedagogization of the pupil's family environment**
- **Strengthening parental competencies**
- **Project activities to support pupils with low socio-economic status**
- **Coordination of counselling services in schools**
- **Implementation of awareness-raising and educational programmes for pupils**
- **Implementation of awareness-raising and educational programmes for pupils' families**

List of social educators' activities

- **Implementation of awareness-raising and educational programmes for pedagogical staff**
- **Communication and information sharing with school counseling staff**
- **Communication and information sharing with teachers**
- **Methodological support for pedagogical staff**
- **Collegial support for pedagogical staff**
- **Compiling an individual educational programme for pupils**
- **Participation in work meetings**
- **Supporting pupils' adaptation to the school environment**
- **Conducting interviews with the pupil and pupil's legal representatives**
- **Implementation of community circles, group meetings, etc.**
- **Strengthening pupils' motivation for education**
- **Communication and cooperation with the student's family**
- **Communication and cooperation with school management**
- **Surveillance the corridor and school premises**
- **Participation in further education, self-development**

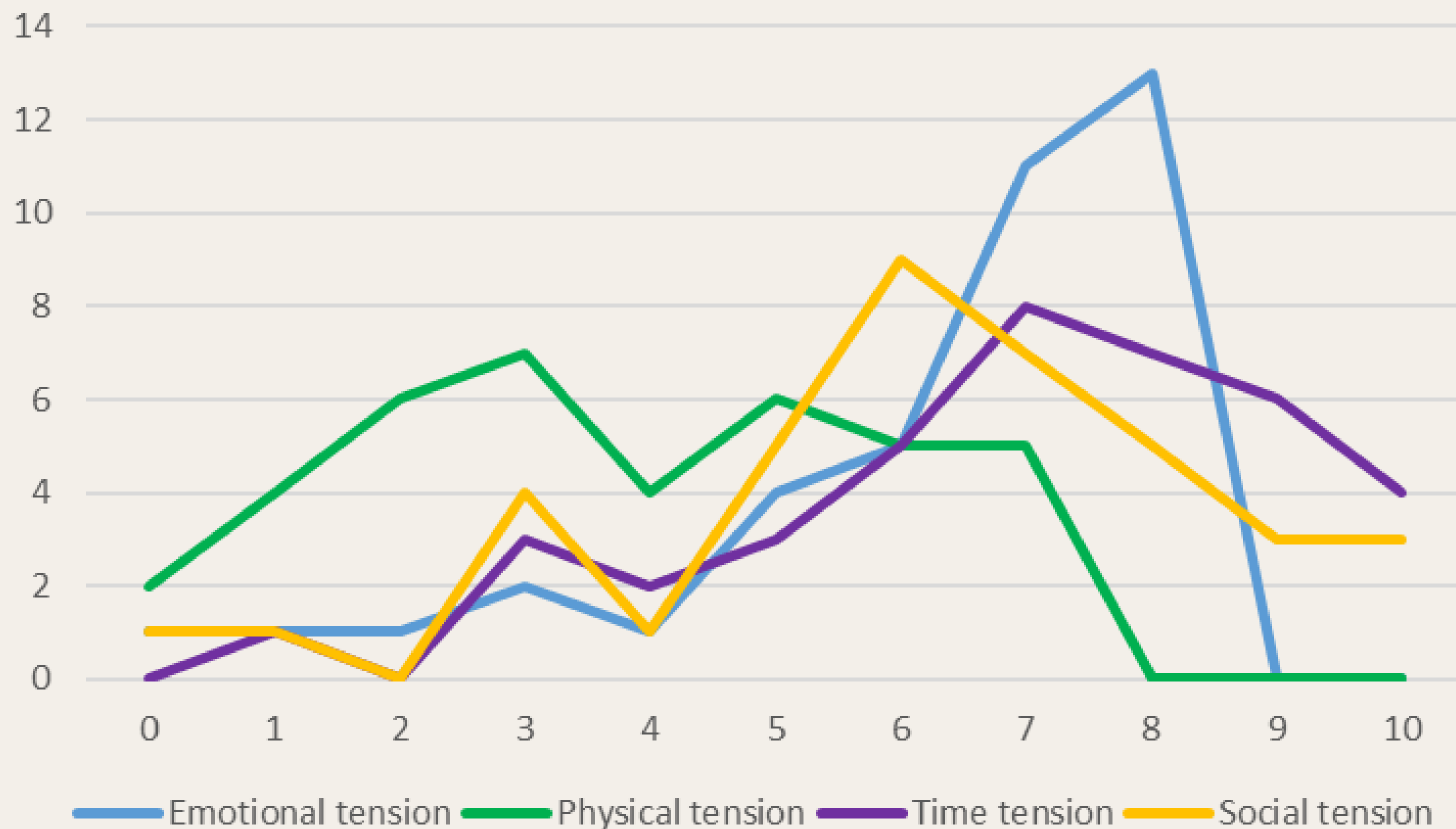
Attitudes of social educators



n=3

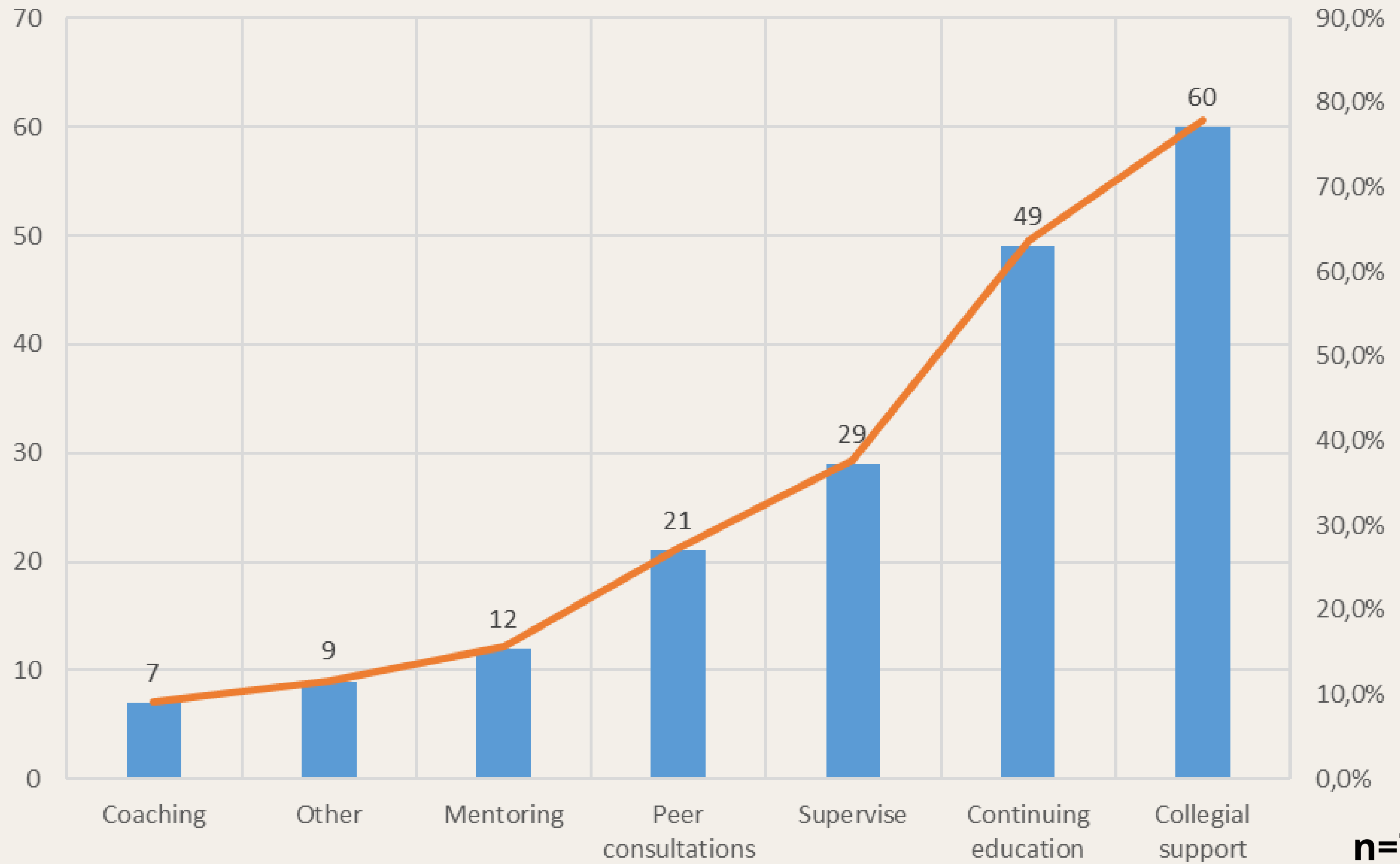
8

Difficulty of the profession



n=3
9

Forms of professional support



Forms of professional support

**We prepared case study seminars
inspired by the Balint method
and peer consultations seminars
for social educators.**

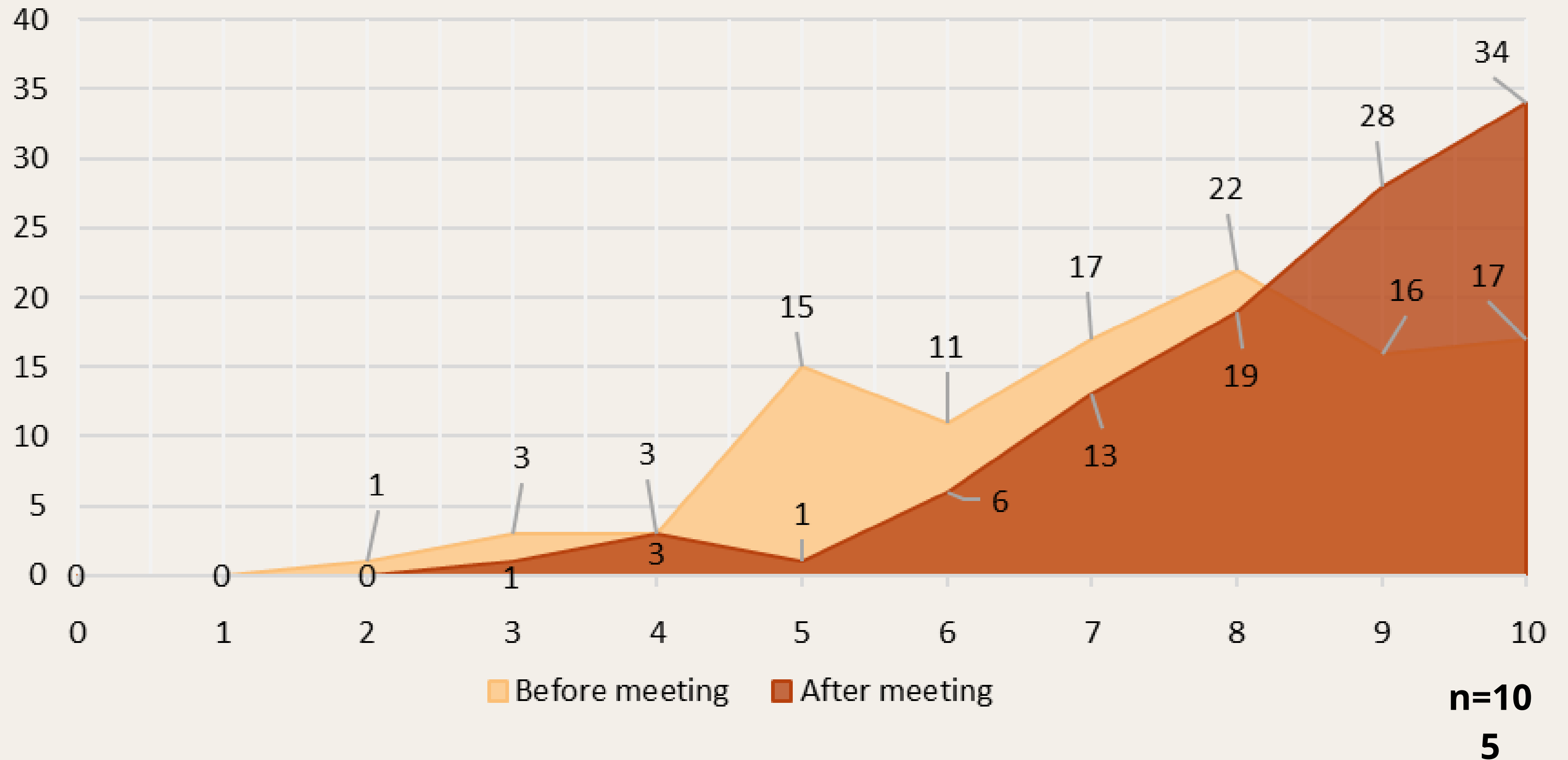
Forms of professional support

We prepared case study seminars inspired by the Balint method and peer consultations seminars for social educators.

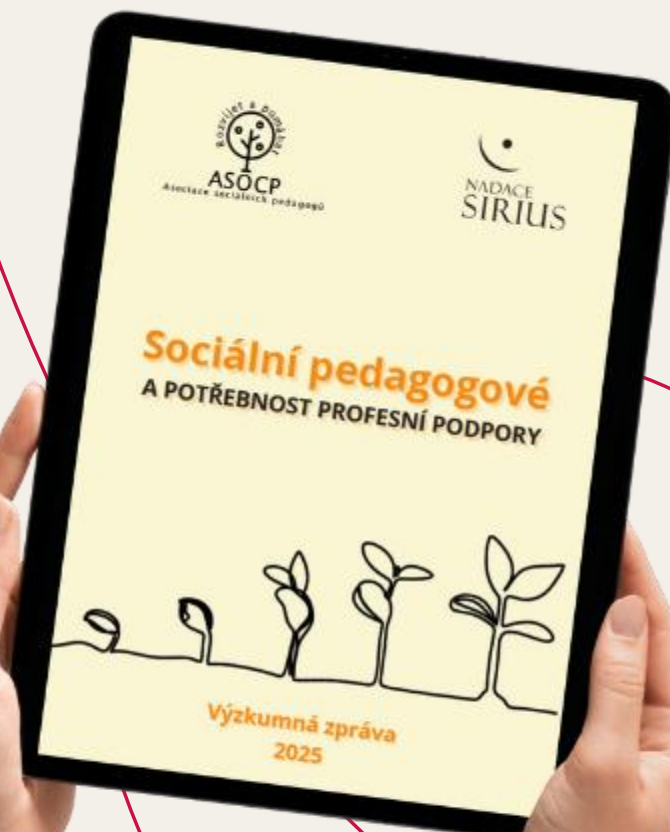
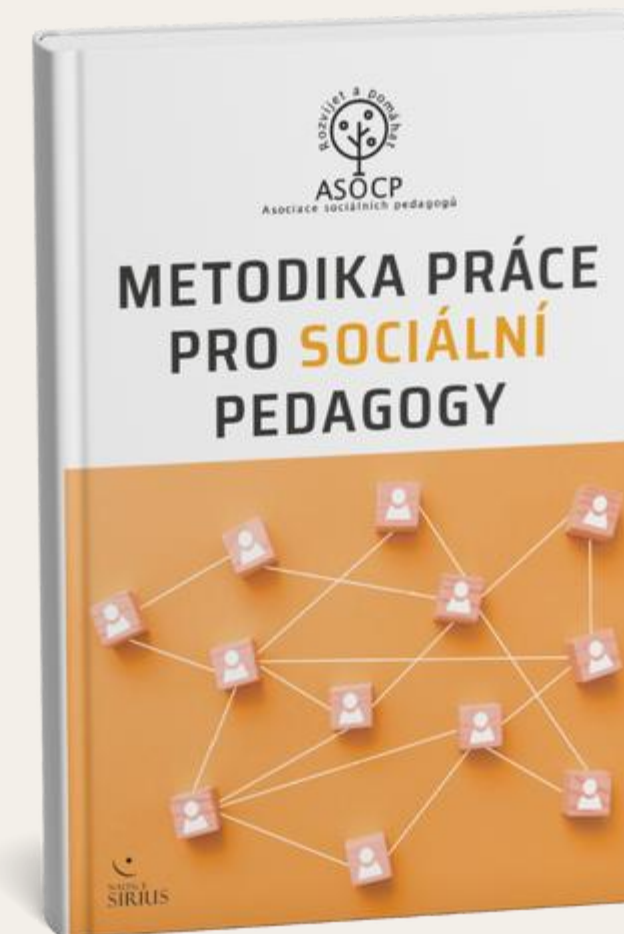
What they have been looking for:

- Sharing experiences**
- Need for professional support**
- New connections**
- New ways of solving**
- It's difficult for them because they're starting**

The impact of the seminars



Our work in the last 2 years





Are you a social educator?



**Please fill in this
questionnaire.**

“Social Educators Change Lives”

**Thank you for
your attention**

Jan Šmída 
jan.smida@asocp.cz
+420 773 231 098

